

# 大学院 建築空間設計特別演習

Graduate Course: Theory of Architectural Space and Planning

## ワークショップ SLOWGRAMMING TOKYO

Workshop "SLOWGRAMMING TOKYO"

- アナミリアッキ**  
[マツチーゼツ]  
[専任教授]  
[専任教授]  
[専任教授]
- Anna MILIJAČKI**  
[Associate Prof. Massachusetts  
Institute of Technology]  
[専任教授]
- Yoshiharu TSUKAMOTO**  
[Arch.]  
[専任教授]
- Kayoko Ota**  
[Architecture Curator, PLAT]  
[専任教授]
- Yasutaka YOSHIMURA**  
[Nautsuka/Yoshimura Architects]  
[専任教授]
- David B. STEWART**  
[Adjunct Prof.]  
[専任教授]
- Taishin SHIOZAKI**  
[Adjunct Prof.]  
[専任教授]
- Hyunsoo KIM [D4]**  
[専任教授]
- Taymour SENBEL [D2]**  
[専任教授]
- Noemi Gomez LOBO [D1]**  
[専任教授]

**REPORT** In January 2018, two-week workshop under the title "Slowgramming Tokyo" was held by Anna Milijački, Associate Professor at MIT. First was to question the current way of consuming architecture, in which, through the Internet and bombarded by images curated by others, we build up our criteria and knowledge. The Instagram application was used as starting point for this reflection, as it relies on the power of the moment being disconnected from history. This contrasts with the process of research, that requires to slowdown and to reveal the non-obvious. Considering this and with the objective of formalising the research into an exhibition, all the projects contributed to give depth into the flattened world of Instagram. "Xshibuya" project reveals the rhythms that compose the frenzied atmosphere of Shibuya crossing in an architectural vision. "Capsule club" is born from the love stories of the inhabitants of the Nakagin tower with the building. "Tokyo Ghosts" digs into the past to rescue the spirits that help to shape Tokyo's metabolising process. Putting on Edward Ruscha's lens, "Every Building" shows all the facades on the Golden Gai in a two meters long book. "Paranoia" tracks the links that connect Sky Tree with hidden agents. "Tsukiji 2020" questions the status of reality in the internet by faking the future construction of Kenzo Tange's Tsukiji project. "Tokyo Blueprint" reflects on the Instagram's unframed realities through the story of a material. The entire process was intertwined with three lectures by Professor Milijački, among which "Fair Use" and "Office US". The workshop culminated with a gallery talk by the guest critics Ms. Kayoko Ota and Mr. Yasutaka Yoshimura. Then, research and exhibition was compiled into a catalogue under the guidance of Professor Yoshiharu Tsukamoto inside the "Theory of architecture for the urban space" class.

[Noemi Gomez LOBO D1]

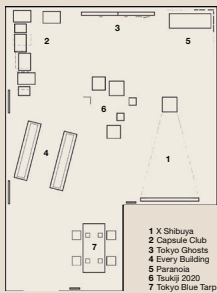
**課題主旨** 2018年1月、マツチーゼツ工科大学アナミリアッキ准教授をメイン講師として2週間のワークショップが行われた。氏はインターネット上に溢れる人々が掲載したイメージに影響を受けて、さながらそれらを基準として知識を構築するという現在の建築の消費方法を疑問視している。インスタグラムは様々なコンテクストから切り離された瞬間のイメージのみが掲載され、早スピードで消費されるプラットフォームであり、本ワークショップではこれらのイメージを分析の対象とし、じっくり読み込みイメージの裏面にある物語性を明らかにすることを目的としている。各チームはインスタグラムのフラットな世界に深みを与え、その物語性を構築して表現している。「カプセルクラブ」は中銀タワに住む人々の建物への愛の物語から生まれる。「東京ゴースト」は、東京の新興代議を形作る精神を救済するための過去の歴史を振り返り、「Every Building」はゴールデンガイのすべてのファサードを長さ2メートルの本で展示している。「パラノイア」は、スカイツリーとその背後に隠れた様々なプレイヤーのネットワークを辿る。「築地2020」は、丹下建三の築地プロジェクトを将来に建設すると仮定することで、インスタグラムにおける物語の不確かさを批評している。この展示のキュレーターは、約4号間の地下で行われた、太田佳代子氏と吉村靖孝氏がゲストキュレーターとして参加した。また、ワークショップに引き続き行われた塚本教授による「都市空間設計特論」において、リサーチと展示の成果物をカタログ化した。

[Anna Milijački D4]



**Ana MILIJAČKI**  
1972年、セルビア生まれ。  
2007年、ハーバード大学工学博士号取得。  
2008年よりマツチーゼツ工科大学准教授。  
2014年よりフェリス学院アメリカカレッジセンター。

Date: January 20th to February 1st 2018  
Location: Midorigaoka Building 4 B1F



# 大学院建築空間設計特別演習 Graduate course: Theory of Architectural Space and Planning — SLOWGRAMMING TOKYO

## 1 | TOKYO\_GHOSTS: THE NEED FOR A CRITICAL MEMORY?

Mohammad Ali EIMAR, Stefano ANDREATTA, Hans HENRIK, HUANG Ke, Siena HIRAO

The Tokyo Ghosts project investigates 27 demolished buildings designed by established architects, and represented in vintage postcards. It aims to bring to life the somewhat forgotten events that shaped the city we know today through these phenomena: Modernism in sense and Modernism, Tange and the Metabolists, 1964 Olympics, a new era, the Bubble Economy, and towards 2020. We hope to revive the perception of these phantom ideas by slowing down the pace, so one is able to digest one building, one idea, and one photo at a time. In doing so we also hope to create a fuller medium — perhaps Instagram, a rather casually used social device, one built with the purpose of reorganizing recollections of what we see here and now in our work, has the power to truly display our newfound conceptions of time and space.



## 2 | EVERY BUILDING IN THE GOLDEN GAI: FROGMENTED IMAGES OF THE DISTRICT

Ji Yuxin, Selma SHIMURA, TAM Kinlaam, Kai KASHIBUCHI, Hiroyuki GONDO

Golden Gai is a small district, which is used to be a prostitution area, composed of tiny bars organized by some very narrow alleys. The increasing number of foreigners brought new prospect to the area and Instagram contributed greatly to the spread of the place. As the information shared in social media is often super real, this work proposes to take a closer look to Golden Gai as it is nowadays. Each building was photographed to reproduce each alley as two continuous façades. To bring the onsite feeling, sounds and smells were collected. Also it is given the opportunity to enter some bars through a perspective drawing combined to a story told by the owner. So it is possible to see all the details of this complex interesting part of Tokyo.



## 3 | XSHIBUYA: INSTAGRAM AS COLLECTIVE MEMORIES

Tinnakrit KLINHUAL, Sakinah Assy LAZUARDIANI, Eiko TSUCHIYA, Guibahce Herdem NALAN, Gerbes Roman ALEXANDER, KIM Sehun

As an image of city catalyst, Instagram has a very instant way of capturing general perceptions of public — especially how certain elements of a city induce personal attraction and interest by the name of the tourists' visual in the trust, most, and most recent form as the users come from various backgrounds. Known as a must-see spot in Tokyo, Shibuya crossing itself has attracted thousands of tourists. Tremendous amount of visual representations of the place has cooled Instagram, indirectly creating collective memories of Shibuya in chunks. Xshibuya, a video project, addresses the image of Shibuya crossing made through collective memories of people on Instagram at the spot. As we architectural students perceive this phenomenon, we recorded something that is more than just an image of the city — its myths, century, year, day, hour cycles.



# 国際大学院プログラム: 建築構想設計特論

International Graduate Program:  
Theory of Architectural Design 2

## 篠原一男の作品分析と 住宅設計課題

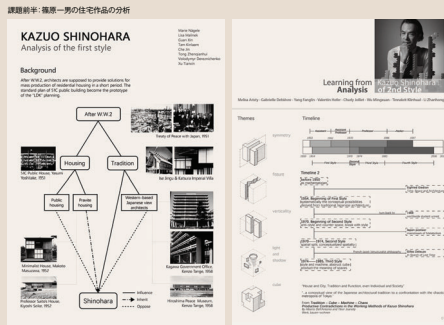
House in Tatehina  
Learning from Kazuo SHINOHARA

- 担当教員**  
**奥山信一** [教授]  
**塩崎太神** [准教授]
- アシスタント**  
**David B. STEWART**  
[Adjunct Prof.]  
**Kentaro ISHIDA**  
[Adjunct associate Prof.]
- ディレクター**  
**スチュワート** [特任教授]  
**石田建太郎** [特任教授]
- TA**  
**香月寿** [准教授]  
**藤本竜子** [D3]

**課題主旨** このクラスは国際大学院プログラムの留学生向けに開講されたスタジオであり、2017年度は34名の学生が履修した。課題は、篠原一男の住宅分析とし、それをもとに住宅設計を行なうのである。前半では学生は4つに分類される様式ごとにグループに分かれて分析を行った上で、それぞれの様式に貫けるコンセプトについて議論を行った。後半の住宅設計課題では篠原の遺作となった「葺科山地の初等幾何」の敷地において、各グループが前半の分析から導き出したキーコンセプトをもとに展開することが求められた。

**ASSIGNMENT** This class was the house design studio held for foreign students of an international graduate program. In the 1st part of this class, each student analyzed each of architectural styles of Kazuo SHINOHARA. Afterwards they extracted a key concept from the analysis and developed it to the situation of the actual site of Shinohara's real work "House in Tatehina Project".

**REPORT** "Imagine yourself as Kazuo Shinohara, and now you are in the phase of the 5th or even 6th style. What would the design of the House in Tatehina look like?" It all started with this hypothesis by Taishin Shiozaki. The house in Tatehina, the last work by Shinohara which has never been actualized, is well known for having myriad sketches for a period extending 10 years. After an opening lecture given by David Stewart, and a tour of the centennial hall building in Tokyo Tech designed by Shinohara, participants were asked to form four groups to study and analyze Shinohara's four styles through several readings. In the second phase, students began experimenting and debating based on an established logic extracted from Shinohara's theories. It was important to retain a good understanding of Shinohara's work; the participants taking a careful look at his styles as one continuous saga. Shinohara passed through the phase of being effected by traditional Japanese and modern architecture in Japan only to later to come up with his own unique understanding for spaces and machine concept — which from there he adapted in using towards his chaos and city theories. The Shinohara studio allowed the opportunity to grasp the key architectural concepts not only by one of the top notch pioneers in Tokyo Tech, but by one of the most prominent post-war Japan architects. For me, Shinohara is a Metaphysicist; Shinohara architecture laid the foundation for new perspectives on space meanings. His theories have left immense traces that can be seen in the works of contemporary architects as famous as Toyo Ito, and Itsumo Hasegawa. [Mohammad Ali EIMAR]



**敷地条件**  
長野県茅野市巻科  
敷地面積 1824.75㎡

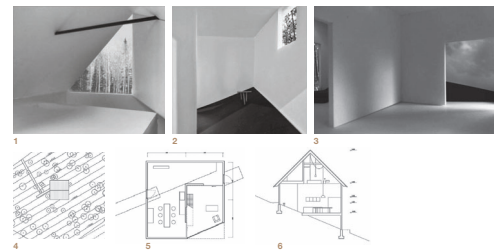
**計画条件**  
樹木の位置は各自で設定するものとする。



# 建築構想設計特論 Theory of Architectural Design 2 — 篠原一男の作品分析と住宅設計課題 House in Tatehina Learning from Kazuo SHINOHARA

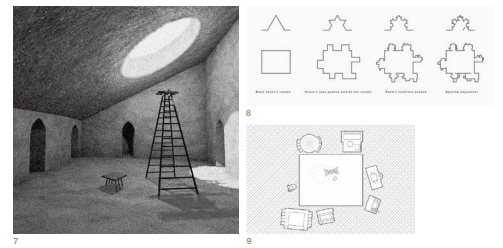
## House in silence Summer house in Tatehina Xu Tianxin, Volodymyr DEREZINCHENKO

- 1 main space (upper part)
- 2 yard
- 3 living room
- 4 master plan
- 5 ground floor plan
- 6 main space section



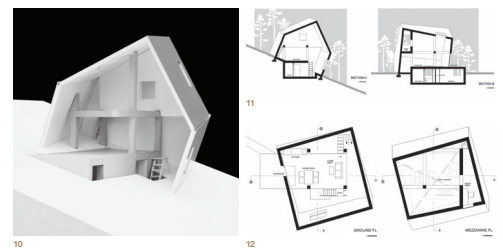
## Shinohara 0 house without context Gabrielle DEBIEVRE Valentin HOFER Charly JOLLIE

- 7 interior main scheme
- 8 design scheme
- 9 floor plan



## The Inclined House Reality and Virtuality Zhanhong LI Mingxuan WU Tinnakrit KLINHUAL

- 10 model
- 11 section
- 12 plan (ground floor & mezzanine)



## Invisible Machine House in Tatehina HUANG Ke KIM Sehun GAO Jieqiong

- 13 model photo (exterior)
- 14 model photo (interior)
- 15 structure model
- 16 section sketch

